

A

B

C

D

2

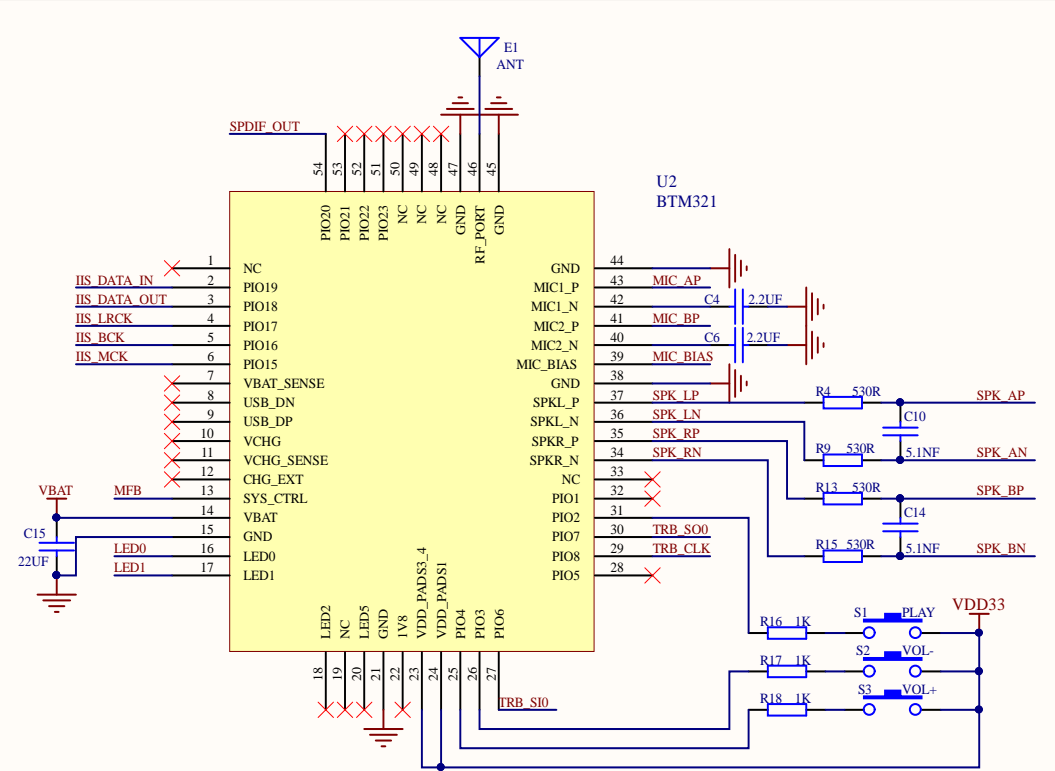
2

3

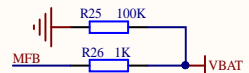
3

4

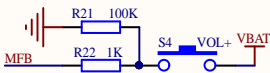
4



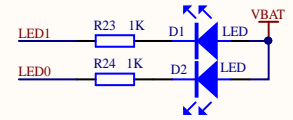
Note: VDD_PADS powers the internal PIO of the module



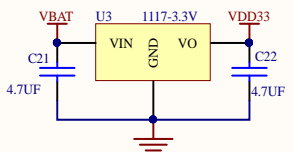
Power on boot



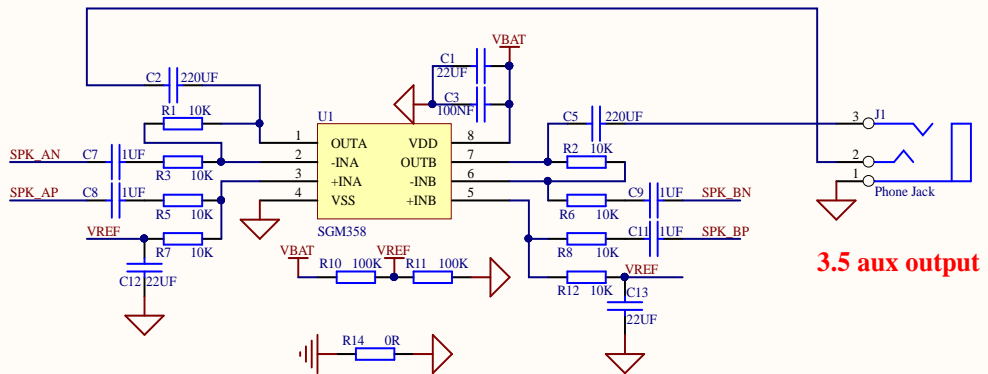
Button boot



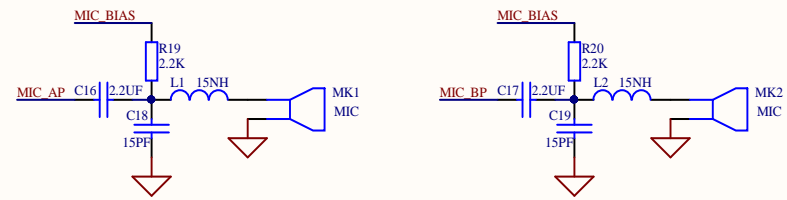
LED : led0 red , led1 blue



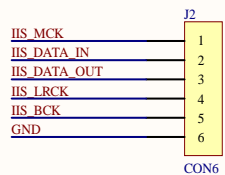
VBAT voltage : 3.3-4.2V



Differential to single-ended analog audio output



microphone input



I2S Digital audio output

Title		
Size	Number	Revision
A4		
Date:	2020-04-23	Sheet of
File:	E:\Bluetooth\BTM331.Sch	Drawn By: